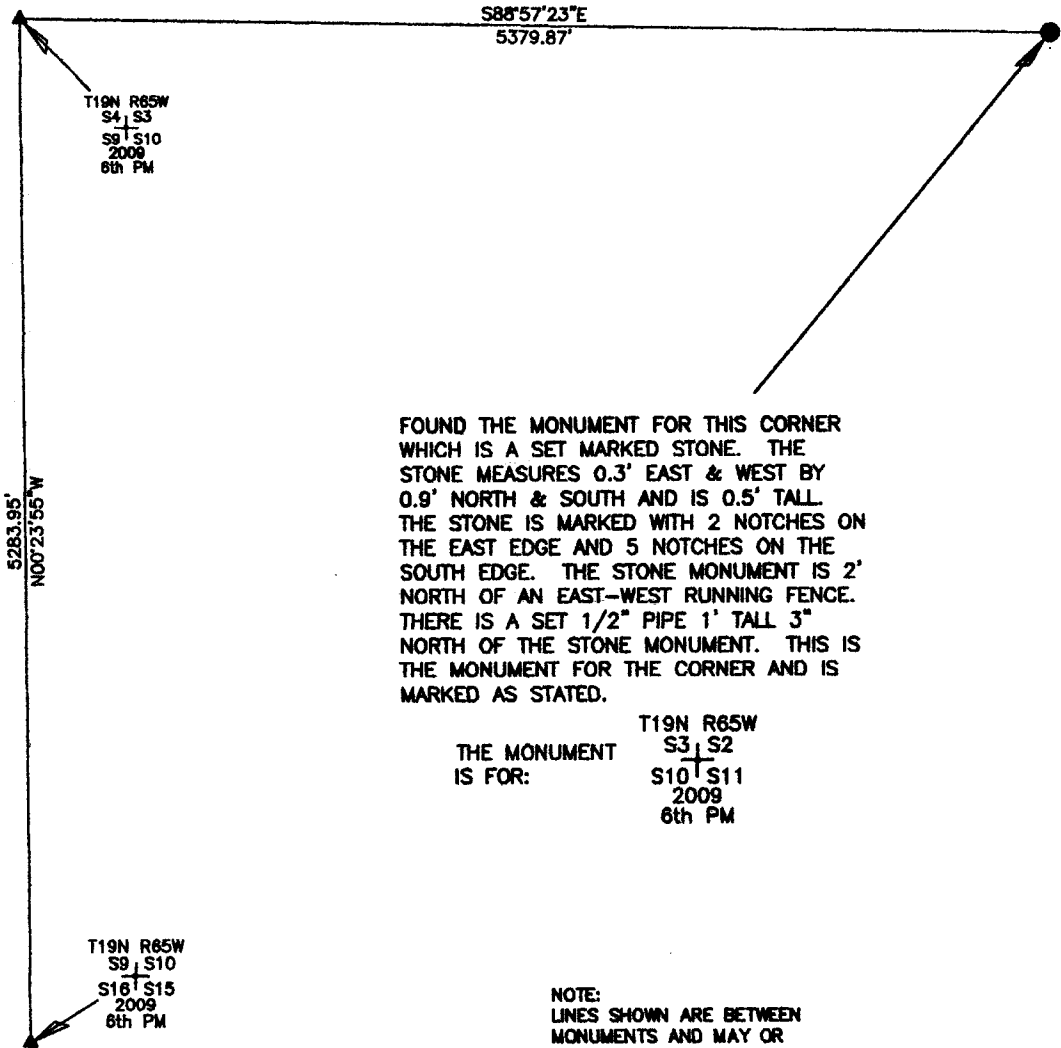


State of Wyoming Corner Record

(In compliance with the *CORNER PERPETUATION AND FILING ACT*, Wyoming Statutes, 1977, Section 36-11-101, et. seq., and the Rules and Regulations of the Board of Registration for Professional Engineers and Land Surveyors.)

Reverse side of this form may be used if more space is needed.

Record of original survey and citation of source of historic information (if corner is lost or obliterated). Description of corner monumentation evidence found and/or monument and accessories established to perpetuate the location of this corner. Sketch of relative location of monument, accessories, and reference points with course and distance to adjacent corner(s) (if determined in this survey). Method and rationale for reestablishment of lost or obliterated corner.



FOUND THE MONUMENT FOR THIS CORNER WHICH IS A SET MARKED STONE. THE STONE MEASURES 0.3' EAST & WEST BY 0.9' NORTH & SOUTH AND IS 0.5' TALL. THE STONE IS MARKED WITH 2 NOTCHES ON THE EAST EDGE AND 5 NOTCHES ON THE SOUTH EDGE. THE STONE MONUMENT IS 2' NORTH OF AN EAST-WEST RUNNING FENCE. THERE IS A SET 1/2" PIPE 1' TALL 3" NORTH OF THE STONE MONUMENT. THIS IS THE MONUMENT FOR THE CORNER AND IS MARKED AS STATED.

THE MONUMENT IS FOR: T19N R65W S3 | S2 S10 | S11 2009 6th PM

NOTE: LINES SHOWN ARE BETWEEN MONUMENTS AND MAY OR MAY NOT BE SECTION OR SECTION SUBDIVISION LINES.

THE MONUMENT FOR THIS CORNER IS A SET MARKED STONE WHICH MEASURES 0.9' NORTH & SOUTH AND 0.3' EAST & WEST AND PROTRUDES ABOVE THE GROUND 0.5'. THE STONE IS MARKED WITH 2 NOTCHES ON THE EAST EDGE & 5 NOTCHES ON THE SOUTH EDGE.

- CORNER MONUMENT SYMBOLS**
- RECORD IS FOR THIS CORNER MONUMENT.
 - ▲ A RELATED CORNER OR WC MONUMENT.

SCALE 1"=1000'
(EXCEPT IN TRIVIAL CASES)
BEARINGS ARE RELATED TO WGS 84 WITH GPS OBSERVATIONS
DRAWN BY: NJM
P.C. J. FLOYD
COUNTY: LARAMIE

Date of Field Work: 04/16/2009 Office Reference: _____

CROSS INDEX DIAGRAM

	1	2	3	4	5	6	7	8	9	10	11	12	13	14	15	16	17	18	19	20	21	22	23	24	25	
A																										
B																										
C																										
D																										
E																										
F																										
G																										
H																										
I																										
J																										
K																										
L																										
M																										
N																										
O																										
P																										
Q																										
R																										
S																										
T																										
U																										
V																										
W																										
X																										
Y																										
Z																										

Firm/Agency, Address
UELS, LLC
85 South 200 East
Vernal, Utah 84078
 Telephone Number: 435-789-1017

This corner record was prepared by me or under my direction and supervision.
SEAL & SIGNATURE



RECORDED 6/22/2009 AT 12:06 PM REC# 525083 K# 2118 PG# 881
 DEBRA K. LATHROP, CLERK OF LARAMIE COUNTY, WY PAGE 1 OF 1

CORNER COMMON TO 4 SECTIONS
 Corner Name: NORTHEAST CORNER OF SECTION 10 Section: 10 T. 19N R. 65W ; 6TH P.M. Cross Index No.: E-17
 SBRPEPLS/PLSW: March 1994 (CLCR...SJA)